



# USB 3.0 TO VGA GRAPHIC ADAPTER



**Quick Installation Guide**  
**DA-70450**

# 1. Installing the Driver

**Caution: DO NOT connect the adapter to your computer before installing the provided driver.**

Insert the provided CD into a computer's disc drive and the **AutoPlay** will be launched automatically. If the **AutoPlay** does not appear, locate and double-click on the **Setup.exe** file in the driver folder.

**For Windows Vista® / Windows 7® users:**

- A. Please click <**Run Setup.exe**> to execute the installer program.
- B. If you encounter a **User Account Control** dialog box when attempting to install a program, enter an administrator password or click <**Allow**> / <**Yes**> to start the installation.
- C. The **License agreement** will be prompted. Click <**I Accept**> to start the driver installation.
- D. Click <**Yes**> to restart or <**No**> to manually restart later, if a promoting to restart computer message appears.

### **For Windows XP® users:**

- A. The **License agreement** will be prompted.  
Click <**I Accept**> to start the driver installation.
- B. Click <**Yes**> to restart or <**No**> to manually restart later, if a promoting to restart computer message appears.


## **2. Making the Connection**

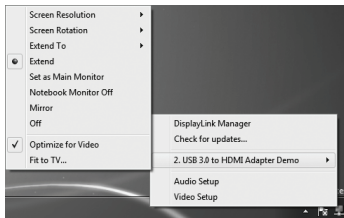
- A. Connect the USB 3.0 Display Adapter to a monitor and a computer. The screen may temporarily go black or flash during this process.
- B. The reminder message will appear on the system tray, when the adapter has been detected by the operating system.

## **3. Changing the Display Mode**

There are several ways to utilize the monitor attached on the adapter. The add-on monitor can be configured to use either “**Mirror mode**”, “**Extended mode**” or be the **Primary** display as described in this section.

## Utility:

- Click <  (utility icon) > in the **Windows System Tray**.
- Select a preferred option, and then click it using mouse.



## Windows configuration:

Position the mouse anywhere on the computer desktop, right-click and select <**Screen Resolution**> on Windows 7<sup>®</sup>, **Personalize** > **Display Settings** on Windows Vista<sup>®</sup> or **Properties** > **Settings** on Windows XP<sup>®</sup>.

